

April 29, 2019  
Peirods 1,2,4,6

$$\begin{array}{r} -15 + 9 - 4 \\ \hline -6 - 4 = -10 \end{array}$$

If you were absent Friday, you need to take the Algebra Prognosis test today. Write a pass to the Media Center and wait patiently for me to get your materials.

Warm Up - Pg. 519

$$5 \text{ } \overbrace{+(-2)}$$

**Class Work -**

We will begin our review for FSA. You will be given a Practice Test Booklet and we will work out of it in class together. As we complete problems, we will discuss as a class the solutions.

**Remember the MATH FSA is May 7-8.**

**IXL - 7th Grade Skills AA.5 and AA.6**

$$1) \quad 4(\boxed{6x} + \textcircled{11})$$

$$(4 \cdot 6x) + (4 \cdot 11)$$

$$24x + 44$$

2)

$x=1$

$x=2$

$x=3$

$$2x+5=9$$



$$2x+5 < 9$$



$$4x-5 < 7$$



$$\frac{\$12}{10 \text{ lb}} = \frac{1.20}{1 \text{ lb.}}$$

$\div 10$  (curved arrow from 12 to 1.20)  
 $\div 10$  (curved arrow from 10 lb to 1 lb.)

---


$$3 \frac{1}{2} = \frac{7}{2}$$

7	1	2		
-	-	-	-	-
	<del>0</del>	/	/	
.	.	.	.	.
		2		
9				

$$3\frac{1}{2} \rightarrow 7\frac{1}{2}$$

in grid



April 29, 2019

Period 5

Warm Up- Read Pg. 337, answer #s 1-3 on page 338

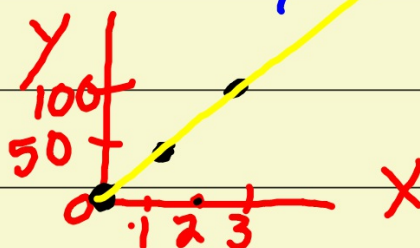
Class Work-

Video - Edpuzzle Independent and Dependent Variables

(0,0)

indep. ~~X~~  
dep. Y

time $x$ (h)	0	1	2	
distance $y$ (m)	0	50	100	



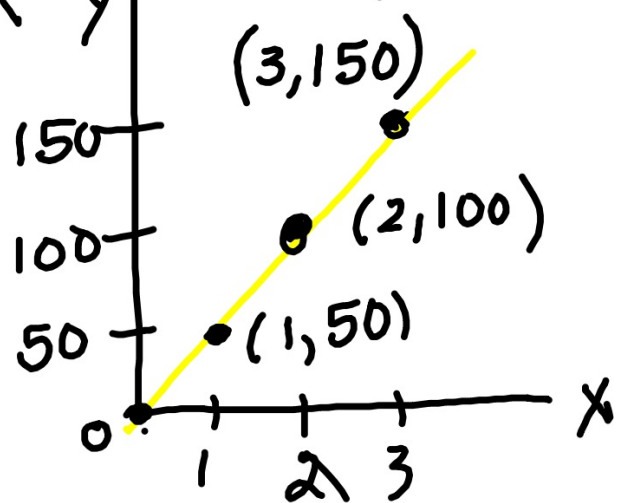
linear  
graph

X	time(h)	0	1	2	3
Y	distance (m)	0	50	100	150

multiplicative  
 $y = 50x$

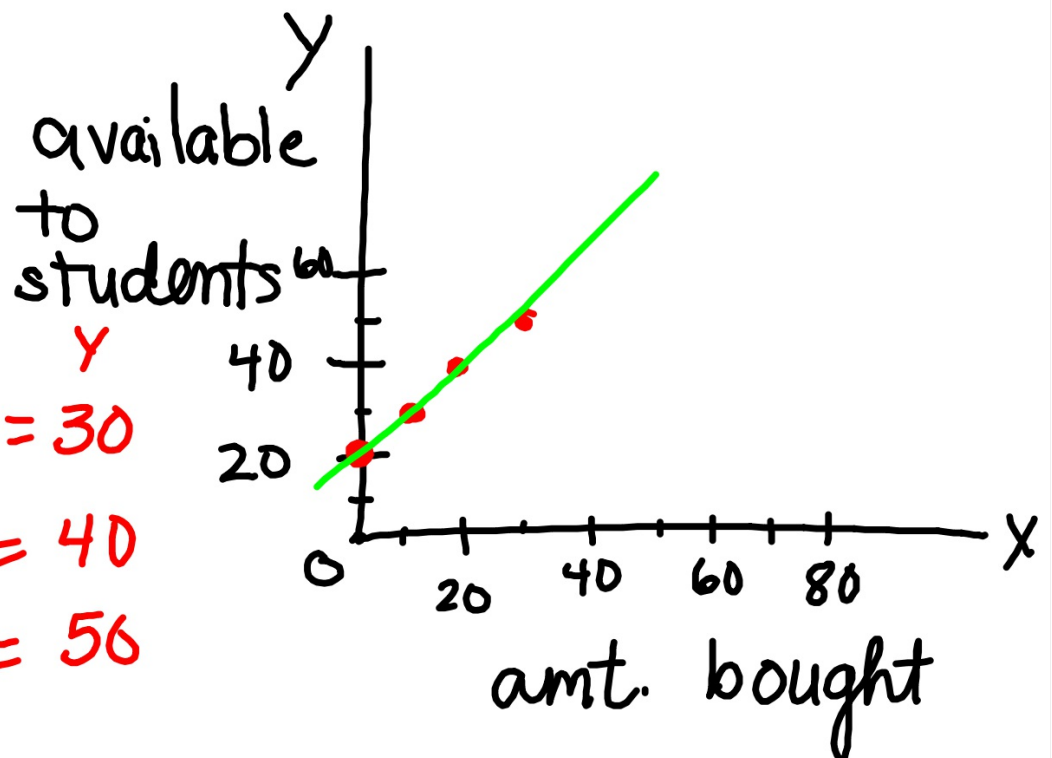
KISS  $y = 50x$

X	$50x$	y
0	$50(0)$	0
1	$50(1)$	50
2	$50(2)$	100





X	Y
20 + 10 = 30	
20 + 20 = 40	
20 + 30 = 50	



$$y = x + 20$$

additive

delivery \$5  
pizza \$6  
cost

#	0	1	2
cost	5	11	17

